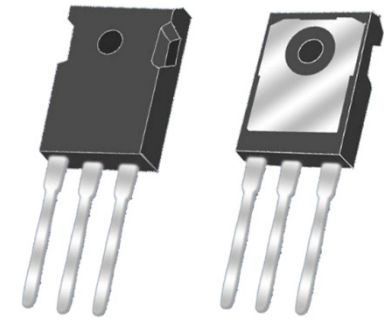


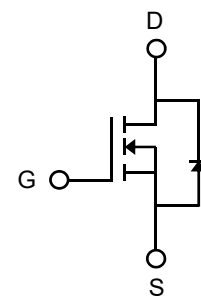
## Description

The PSJMTAF60R26 is a high voltage MOSFET and is designed to have better characteristics, such as fast switching time, low gate charge, low on-state resistance and have a high rugged avalanche characteristics. This power MOSFET is usually used at high speed switching applications in power supplies, PWM motor controls, high efficient DC to DC converters and bridge circuits.

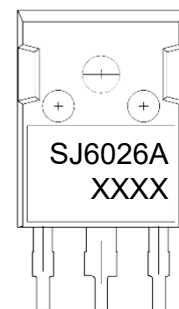


G D S

TO-247-3L



Circuit Diagram



Marking (Top View)

### MOSFET Product Summary

$V_{DS}(V)$	$R_{DS(on)}(m\Omega)(Typ)$	$I_D(A)$
600	21@ $V_{GS} = 10V$	90

## Feature

- High Power and current handing capability
- Lead free product is acquired
- Surface Mount Package

## Applications

- PWM applications
- Load switch
- Power management
- DC-DC Converters
- Wireless Chargers

## Absolute maximum rating@25°C

Rating	Symbol	Value	Units
Drain-Source Voltage	$V_{DS}$	600	V
Gate-Source Voltage	$V_{GS}$	$\pm 30$	V
Drain Current-Continuous <sup>1)</sup>	$I_D$	$T_C=25^\circ C$	90
		$T_C=100^\circ C$	58
Pulsed Drain Current <sup>2)</sup>	$I_{DM}$	270	A
Total Power Dissipation <sup>3)</sup>	$P_D$	446	W
Avalanche Current <sup>4)</sup>	$I_{AS}$	13	A
Avalanche Energy <sup>4)</sup>	$E_{AS}$	5280	mJ
Thermal Resistance , Junction-case <sup>5)</sup>	$R_{\theta JC}$	0.28	$^\circ C/W$
Thermal Resistance Junction-to-Ambient <sup>6)</sup>	$R_{\theta JA}$	28.4	$^\circ C/W$
Junction and Storage Temperature Range	$T_J, T_{STG}$	-55~+150	$^\circ C$

## Electrical characteristics per line@25°C (unless otherwise specified)

Parameter	Symbol	Conditions	Min.	Typ.	Max.	Units
<b>Off Characteristics</b>						
Drain-Source Breakdown Voltage	$BV_{DSS}$	$V_{GS} = 0V, I_D = 250\mu A$	600	-	-	V
Zero Gate Voltage Drain Current	$I_{DSS}$	$V_{DS} = 600V, V_{GS} = 0V$	-	-	10	$\mu A$
Gate-Body Leakage Current	$I_{GSS}$	$V_{GS} = \pm 30V, V_{DS} = 0V$	-	-	$\pm 100$	nA
<b>On Characteristics</b>						
Gate Threshold Voltage	$V_{GS(th)}$	$V_{DS} = V_{GS}, I_D = 250\mu A$	3.0	3.7	5.0	V
Drain-Source On-State Resistance	$R_{DS(ON)}$	$V_{GS} = 10V, I_D = 40A$	-	21	26	m $\Omega$
<b>Dynamic Characteristics<sup>7)</sup></b>						
Input Capacitance	$C_{iss}$	$V_{DS} = 50V, V_{GS} = 0V,$ $f = 1MHz$	-	9440	-	pF
Output Capacitance	$C_{oss}$		-	503	-	
Reverse Transfer Capacitance	$C_{rss}$		-	6.7	-	
<b>Switching Characteristics<sup>7)</sup></b>						
Turn-on Delay Time	$t_{d(on)}$	$V_{DS} = 400V, V_{GS} = 10V,$ $R_G = 2\Omega, I_D = 40A$	-	56	-	ns
Turn-on Rise Time	$t_r$		-	74	-	
Turn-Off Delay Time	$t_{d(off)}$		-	128	-	
Turn-Off Fall Time	$t_f$		-	6.0	-	
Total Gate Charge	$Q_g$	$V_{DS} = 480V, V_{GS} = 10V,$ $I_D = 50A$	-	193	-	nC
Gate-Source Charge	$Q_{gs}$		-	47	-	
Gate-Drain Charge	$Q_{gd}$		-	96	-	
Gate Resistance	$R_g$	f=1MHz, Open Drain	-	1.8	-	$\Omega$
<b>Drain-Source Diode Characteristics</b>						
Diode Forward Voltage	$V_{SD}$	$V_{GS} = 0V, I_S = 2A$	-	0.7	1.2	V

## Notes:

1. Computed continuous current assumes the condition of  $T_{J\_Max}$  while the actual continuous current depends on the thermal & electro-mechanical application board design.
2. Repetitive Rating: Pulse width limited by maximum junction temperature ( $T_{J\_Max}=150^\circ C$ ).
3. Pulse Test: Pulse Width  $\leq 300\mu s$ , Duty Cycle  $\leq 2\%$ .
4. This single-pulse measurement was taken under the following condition [ $L=60mH, V_{GS}=10V, V_{DS}=50V$ ] while its value is limited by  $T_{J\_Max}=150^\circ C$
5. Device mounted on infinite heatsink
6. Device mounted on FR-4 substrate PC board, 2oz copper, with minimum recommended pad layout.
7. Guaranteed by design, not subject to production

Typical Characteristics

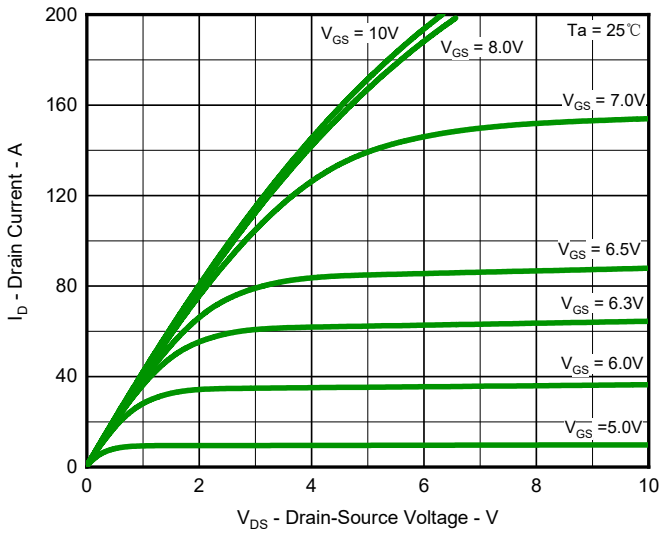


Fig.1 Output Characteristics

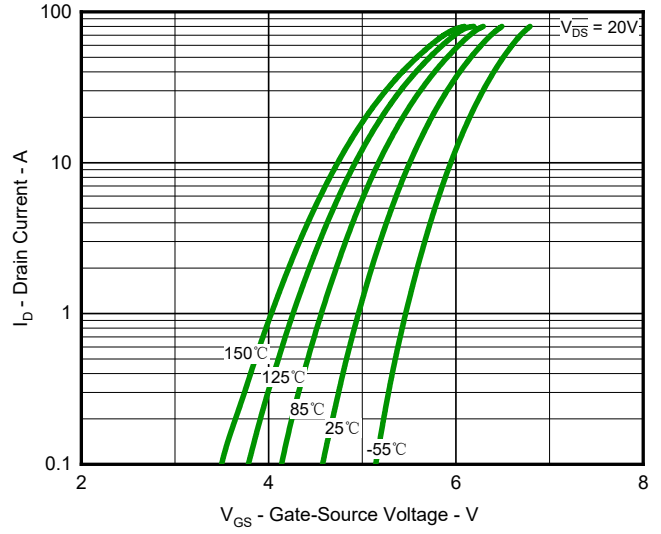


Fig.2 Typical Transfer Characteristic

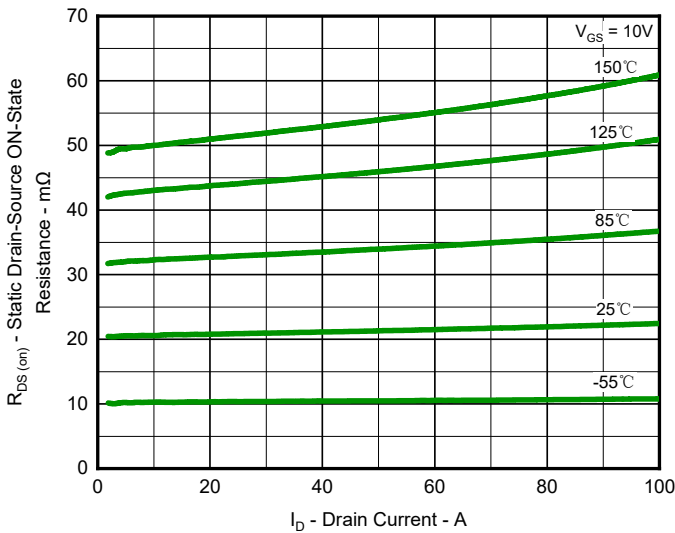


Fig.3 Typical On-Resistance vs Drain Current and Temperature

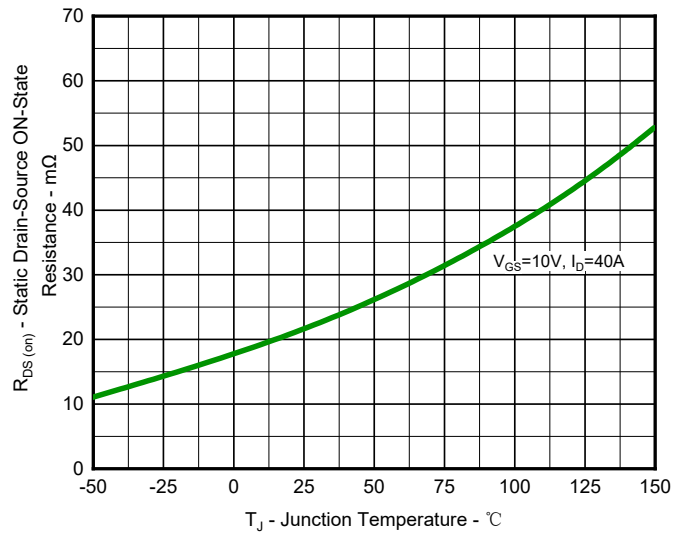


Fig.4 On-Resistance Variation with Temperature

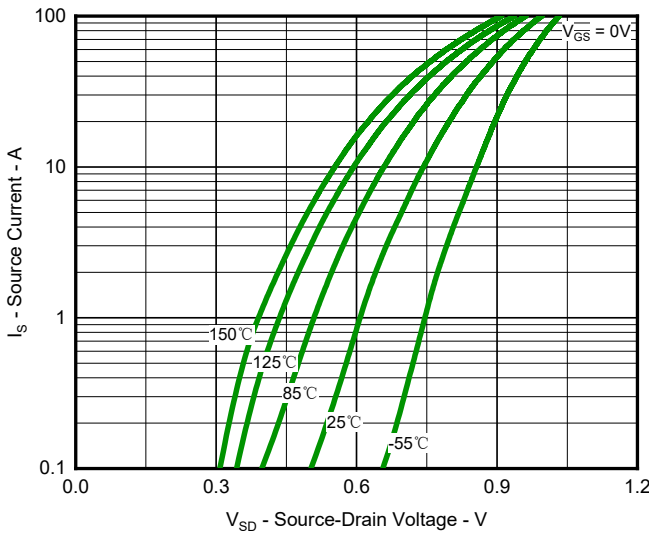


Fig.5 Diode Forward Voltage vs. Current

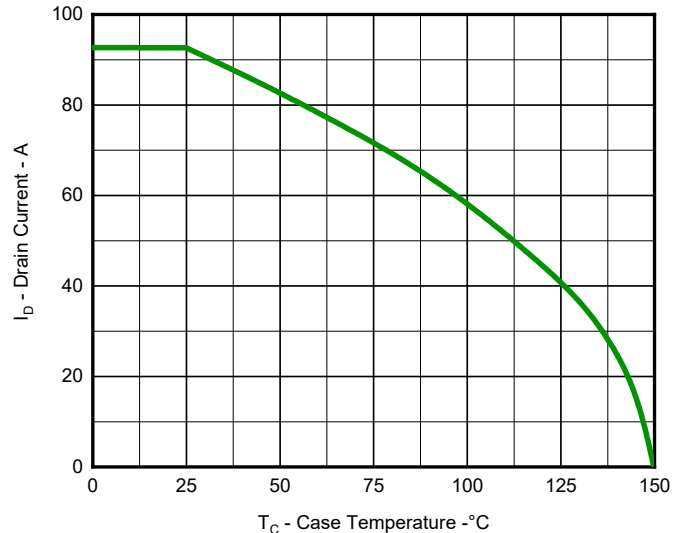


Fig.6 Maximum Drain Current vs. Case Temperature

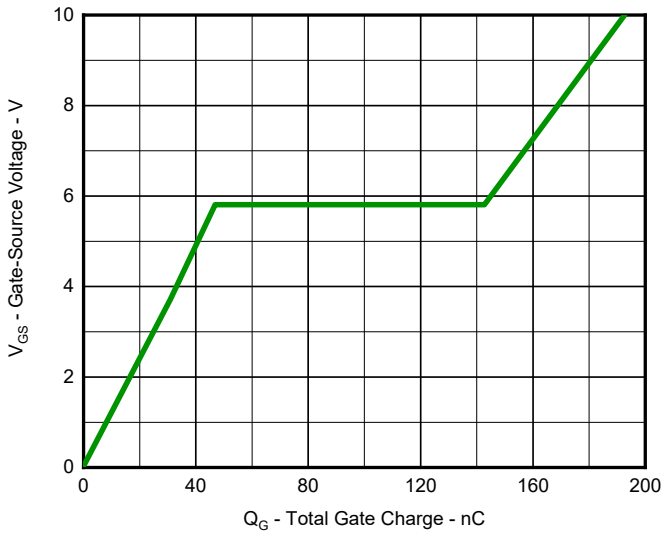


Fig.7 Gate Charge Characteristics

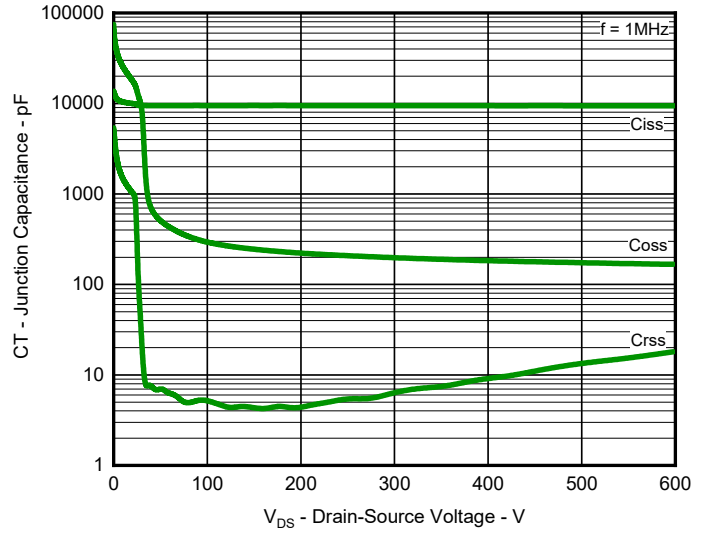


Fig.8 Typical Junction Capacitance

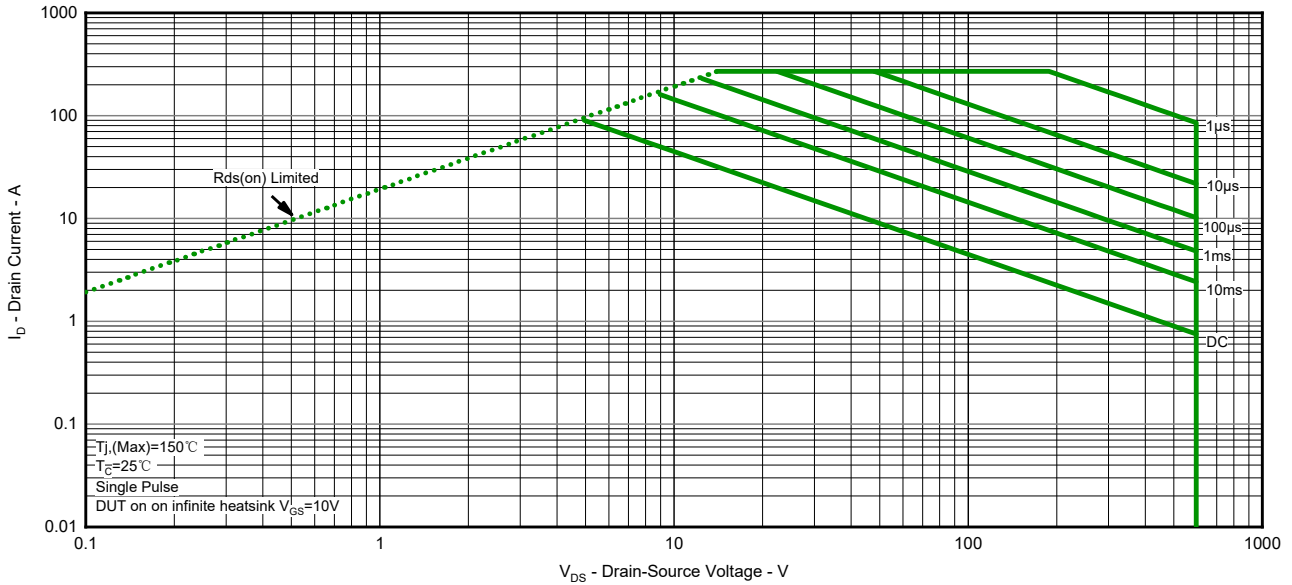


Fig.9 Safe Operation Area

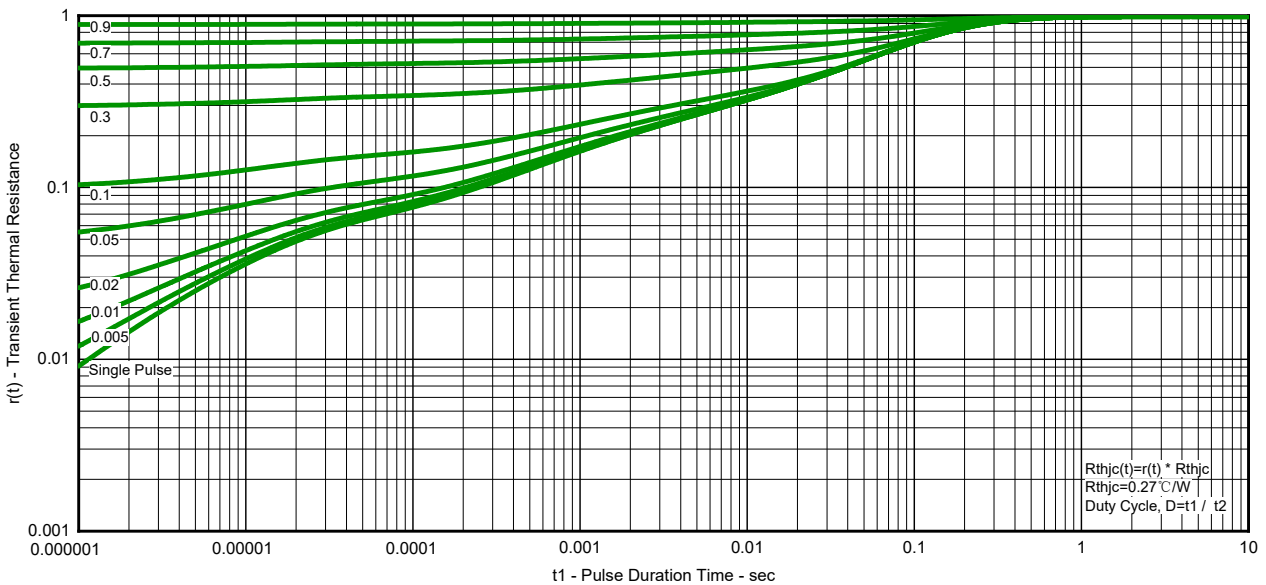
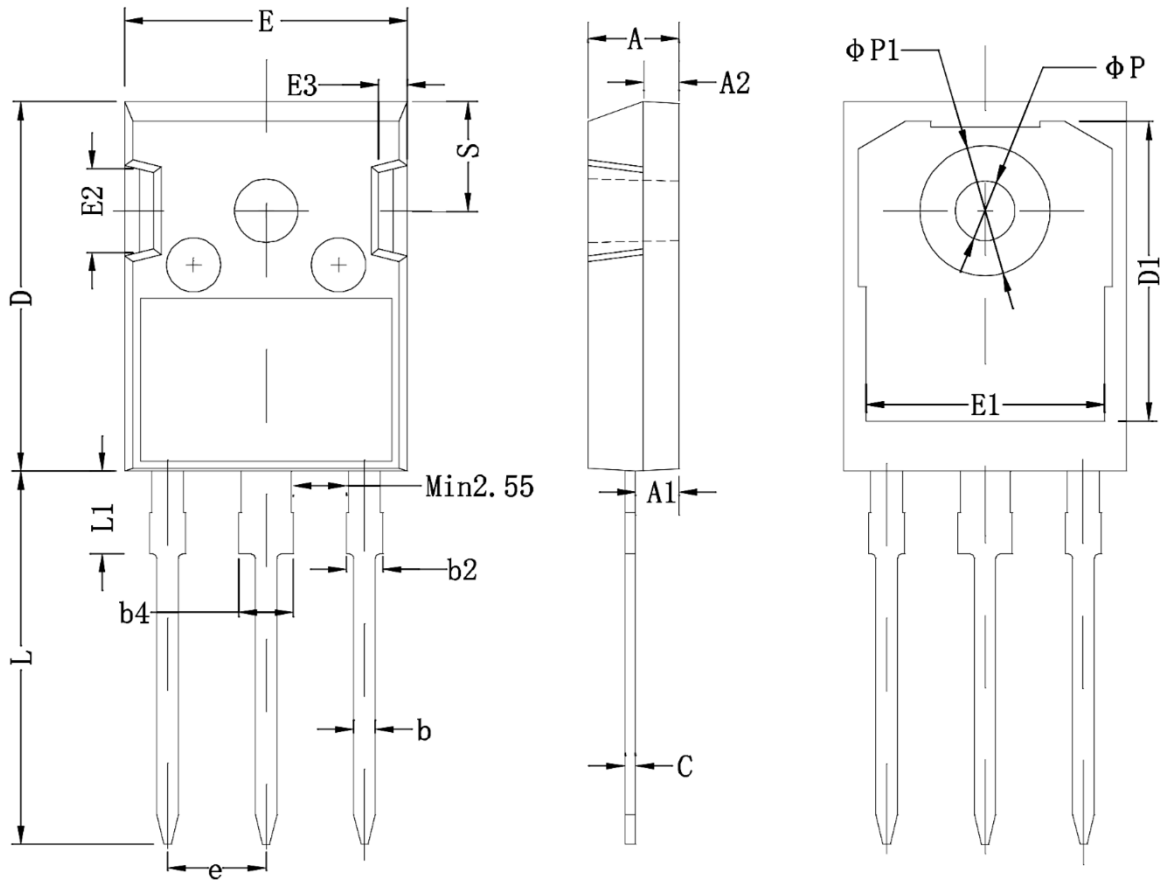



Fig.10 Transient Thermal Resistance

Product Dimension (TO-247-3L)



Dim	Millimeters		Inches		Dim	Millimeters		Inches	
	Min	Max	Min	Max		Min	Max	Min	Max
A	4.80	5.20	0.189	0.205	E1	13.00	13.60	0.512	0.535
A1	2.21	2.59	0.087	0.102	E2	4.80	5.20	0.189	0.205
A2	1.85	2.15	0.073	0.085	E3	2.30	2.70	0.091	0.106
b	1.11	1.36	0.044	0.054	e	5.44 BSC.		0.214 BSC.	
b2	1.91	2.21	0.075	0.087	L	19.82	20.22	0.780	0.796
b4	2.91	3.21	0.115	0.126	L1	-	4.30	-	0.169
c	0.51	0.75	0.020	0.030	φP	3.40	3.80	0.134	0.150
D	20.80	21.30	0.819	0.839	φP1	-	7.30	-	0.287
D1	16.25	16.85	0.640	0.663	S	6.15 BSC.		0.242 BSC.	
E	15.50	16.10	0.610	0.634					


**IMPORTANT NOTICE**

 and **Prisemi**<sup>®</sup> are registered trademarks of **Prisemi Electronics Co., Ltd** (Prisemi), Prisemi reserves the right to make changes without further notice to any products herein. Prisemi makes no warranty, representation or guarantee regarding the suitability of its products for any particular purpose, nor does Prisemi assume any liability arising out of the application or use of any product or circuit, and specifically disclaims any and all liability, including without limitation special, consequential or incidental damages. "Typical" parameters which may be provided in Prisemi data sheets and/or specifications can and do vary in different applications and actual performance may vary over time. All operating parameters, including "Typicals" must be validated for each customer application by customer's technical experts. Prisemi does not convey any license under its patent rights nor the rights of others. The products listed in this document are designed to be used with ordinary electronic equipment or devices, Should you intend to use these products with equipment or devices which require an extremely high level of reliability and the malfunction of which would directly endanger human life (such as medical instruments, aerospace machinery, nuclear-reactor controllers, fuel controllers and other safety devices), please be sure to consult with our sales representative in advance.

Website: <http://www.prisemi.com>

For additional information, please contact your local Sales Representative.

©Copyright 2009, Prisemi Electronics

 **Prisemi**<sup>®</sup> is a registered trademark of Prisemi Electronics.

All rights are reserved.